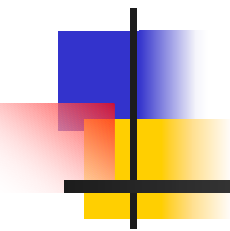
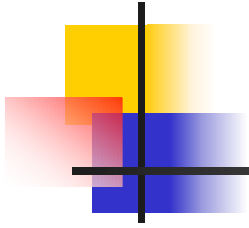


General Reading-Software
For SEKONIC OMR Scanner,
Model SR-2300



Mark ViewTM

SEKONIC

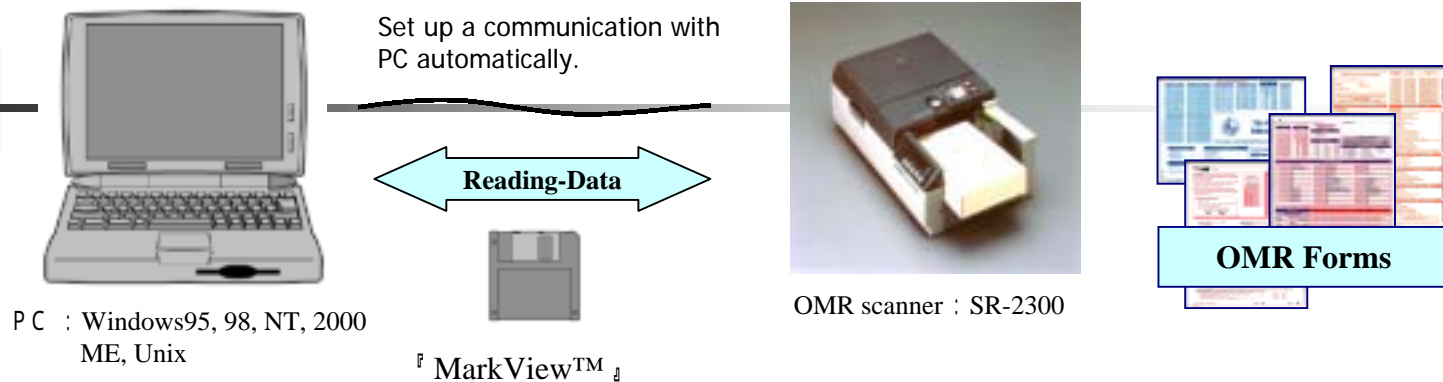


Microsoft, MS, MS-DOS, Windows, Excel, and Windows are registered trademarks of Microsoft Corporation in the U.S and the other countries.

MarkView™ is a trademark of SEKONIC Corporation.

All other brands and product names are trademarks or registered trademarks of their respective companies.

1. You can operate the OMR scanner easily.



MarkView™ *makes it possible not to program any software.*

< *Complete the layout setup for Reading Sheet to the total of Data* >

The layout of OMR Forms can simply be made with mouse.

MarkView™ controls the OMR scanner automatically.

Record the data in the appointed form.

Reading-data can be used immediately on the general software, EXCEL etc.



Function of MarkView™

- User Friendly, Simple Operation.
- Mark-Reading within one click from EXCEL.
- (Add On Function: Output to Worksheets)
- It is possible to operate easily based on EXCEL and with tool bar.
- It is possible to lay out OMR forms matching many kind of OMR Forms.

MarkView™

User Friendly, Simple Operation

Only “Reading-Form” and “Lay out OMR Forms”

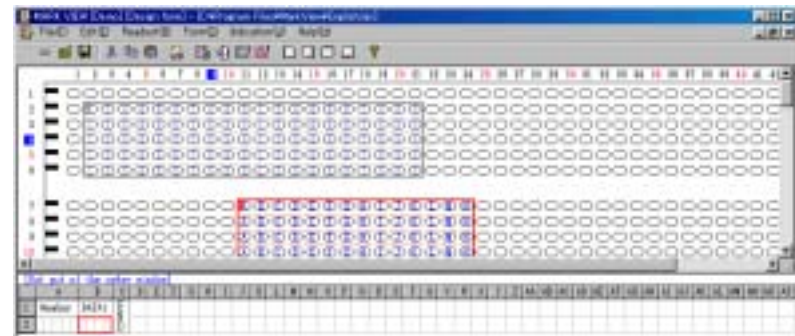
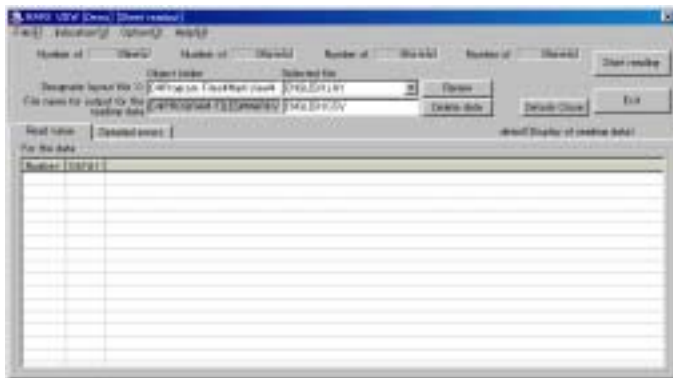
Scan after completion of a layout.

Reading-Form

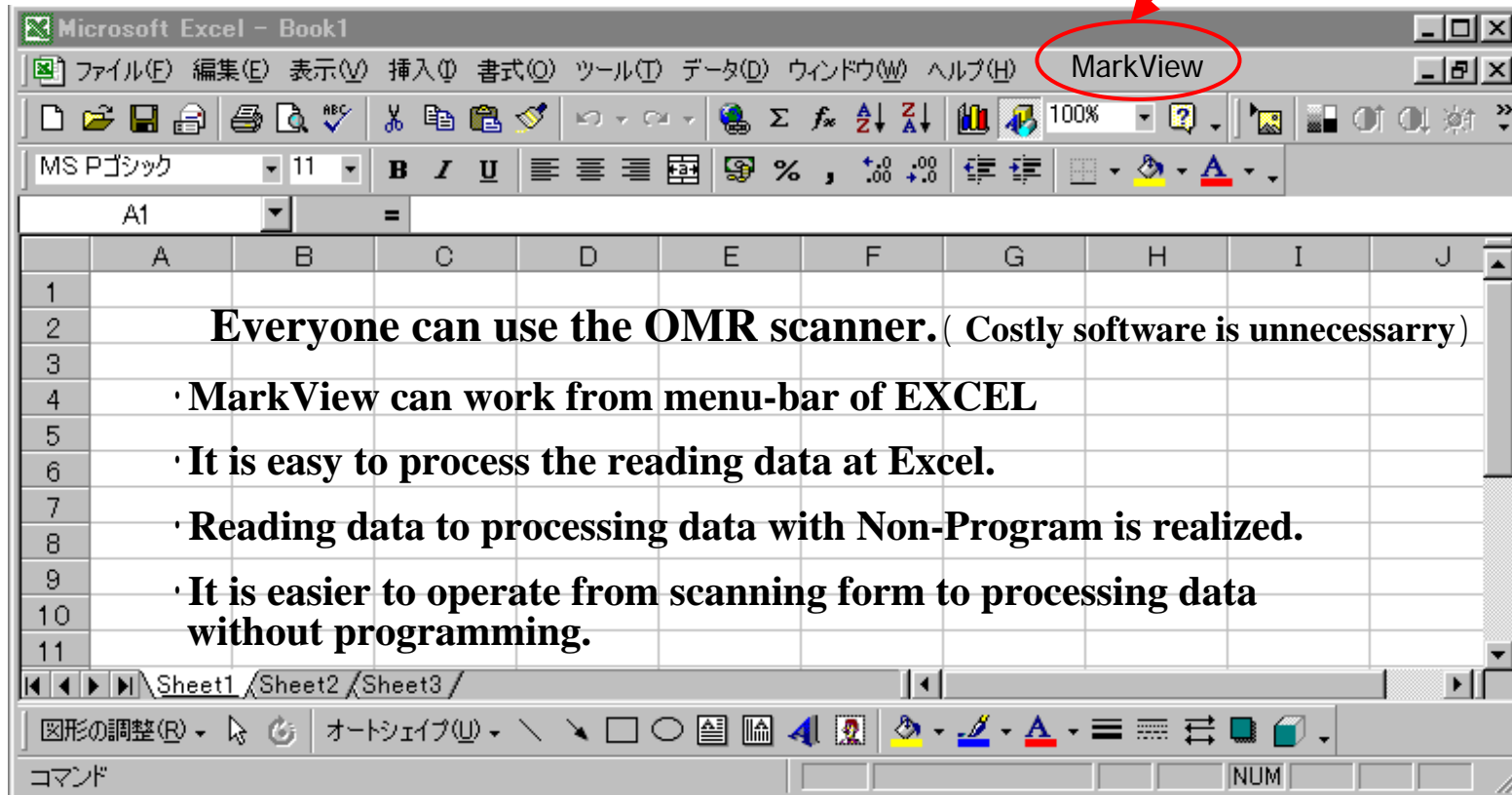


Layout can be done just one time

Lay out OMR Form



Add-on to EXCEL



The screenshot shows the Microsoft Excel interface with the 'MarkView' menu item circled in red. The spreadsheet contains the following text:

Everyone can use the OMR scanner. (Costly software is unnecessary)

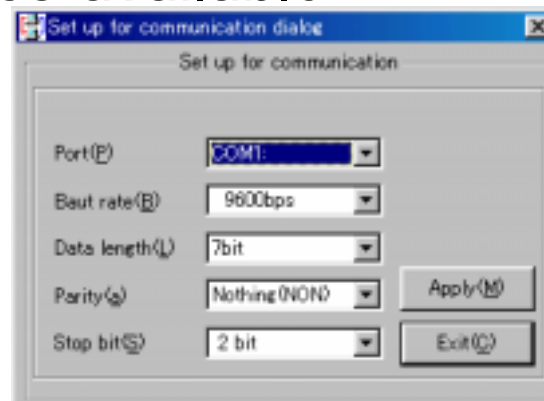
- **MarkView can work from menu-bar of EXCEL**
- **It is easy to process the reading data at Excel.**
- **Reading data to processing data with Non-Program is realized.**
- **It is easier to operate from scanning form to processing data without programming.**

Reading Function-1 : Plug & Play Function

- MarkView sets up a communication with PC automatically.



- Manual setup is also available.



Reading Function-3: Check of error status and mark information

The screenshot displays the MARK VIEW [Demo] [Sheet readout] application window. The menu bar includes File(F), Indication(V), Option(O), and Help(H). Below the menu, there are input fields for 'Number of' (0line(s), 0form(s), 0form(s), 0form(s)) and 'Object folder'. The 'Selected file' field is set to 'POST CARD.LAY' and the 'File name for output for the reading data' is 'POSTCARD.TXT'. A yellow callout bubble points to the 'Selected file' field, stating: "The marked depth can be checked. It is reflected in a setup of a sensitivity level."

The main window is divided into two panes. The left pane, titled 'Mark error [No mark error]', contains a question mark icon and the text "Mark was not found on the required area." Below this is a table with the following data:

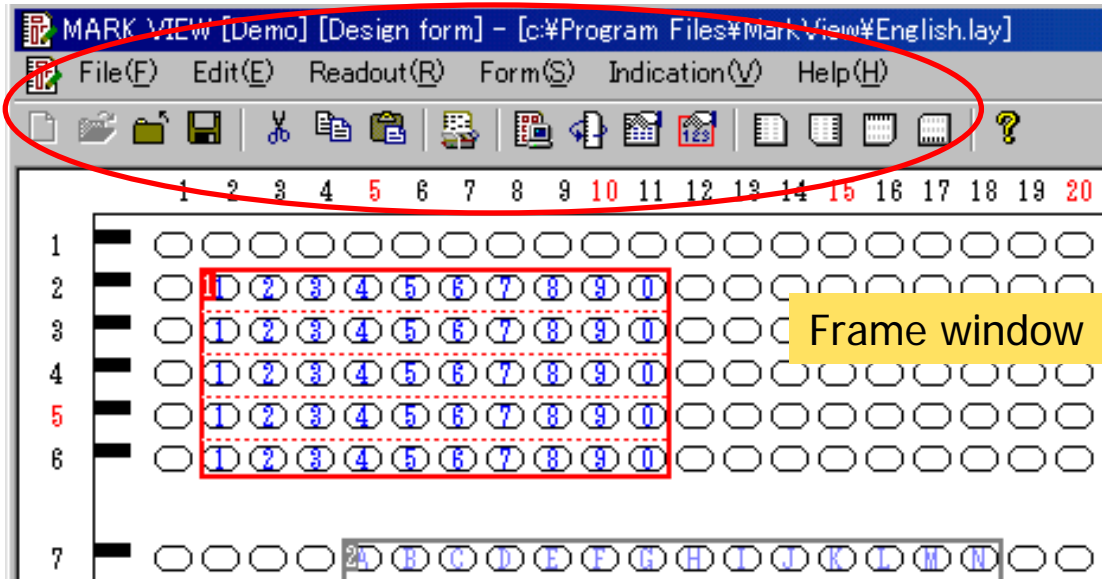
Item...	Assortment	Names	Details
001	Mark error	No mark error	Mark was not found

A yellow callout bubble points to the table, stating: "All error information, such as the mark number / sheet-less error, is recorded."

The right pane, titled 'イメージドキュメント', contains radio buttons for 'データ表示', '感度値表示', 'マーク表示', and '変換値表示'. The '感度値表示' option is selected, and a dropdown menu shows '100%'. Below this is a large grid of characters representing the scanned mark information.

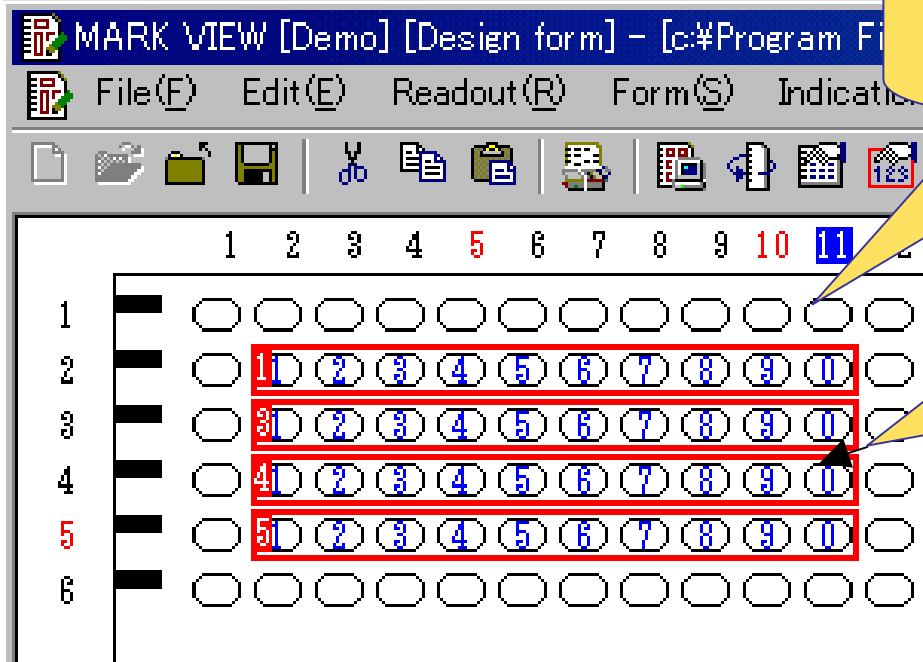
Layout Function-1 : Standard Menu

The standard menu and tool bar of Windows application



- Layout setup can be performed with a mouse.
- Cut & paste (copy) of a "frame" can be performed by right click.
- An attribute setup (property) of a "frame" can be performed by left click.

Layout Function-3 : Movement, change, and deletion of an entry frame



By Ctrl+ left click, package-chooses, moves

The end of a mark frame is added and deleted by the click & drag.

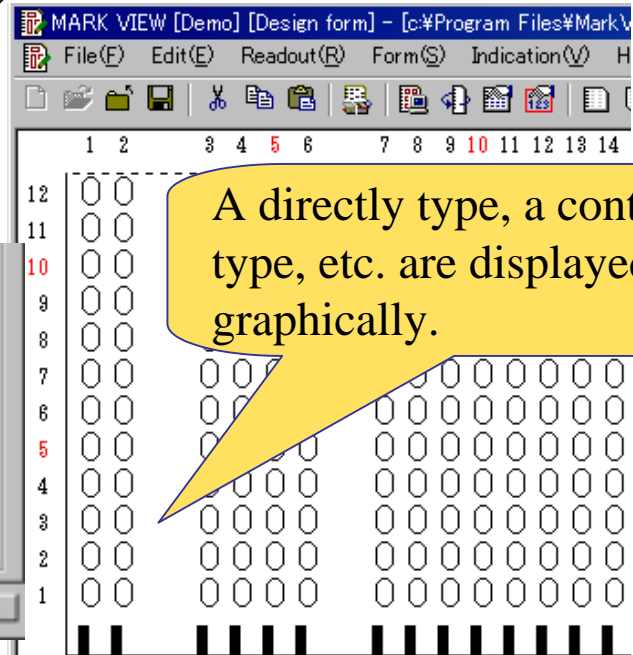
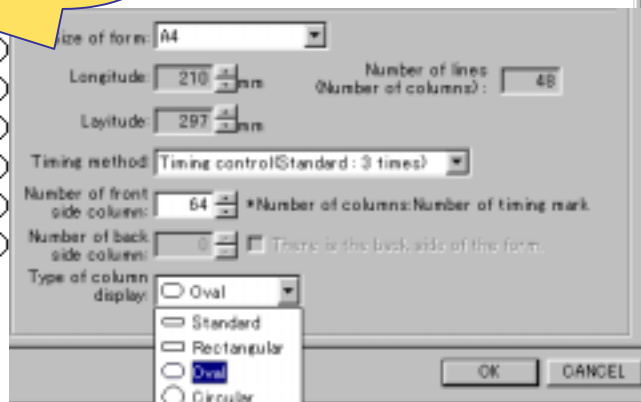
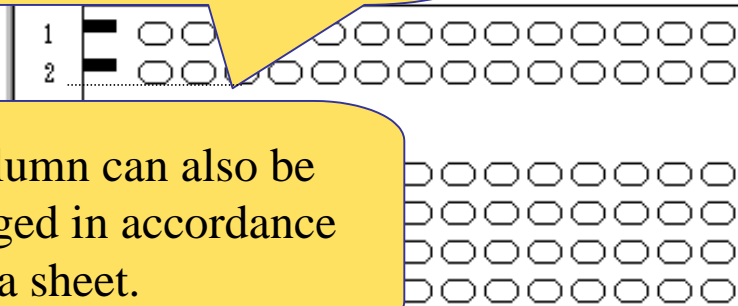
Layout Function-4 : Image Layout

The mark interval united with the actual sheet

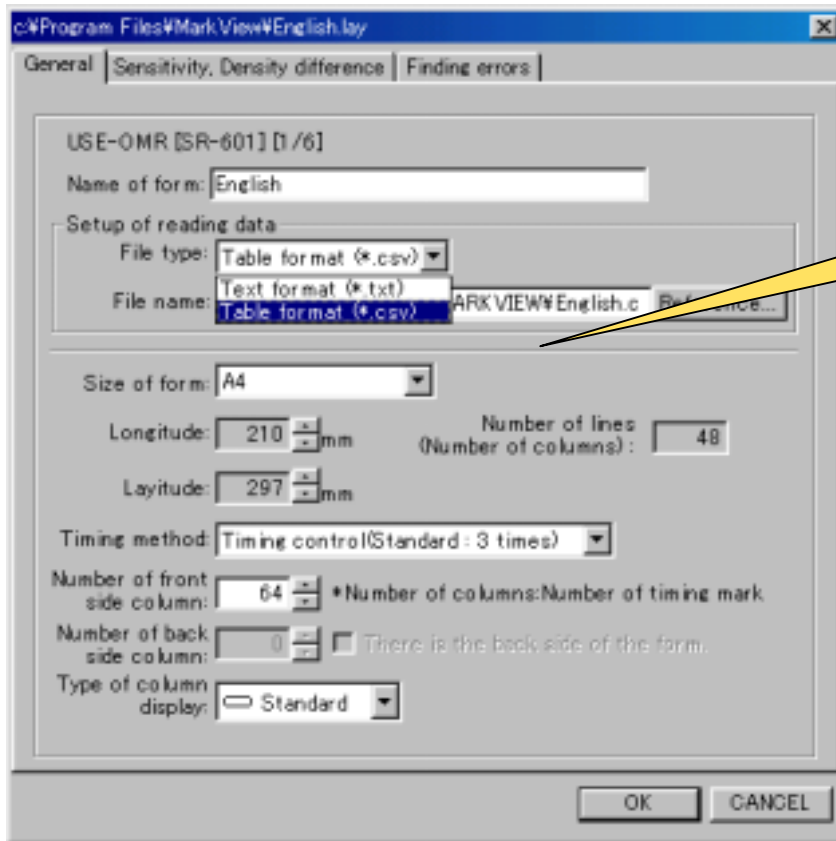
A column can also be changed in accordance with a sheet.

Direction of the upper and lower sides/right and left can be united actual sheet.

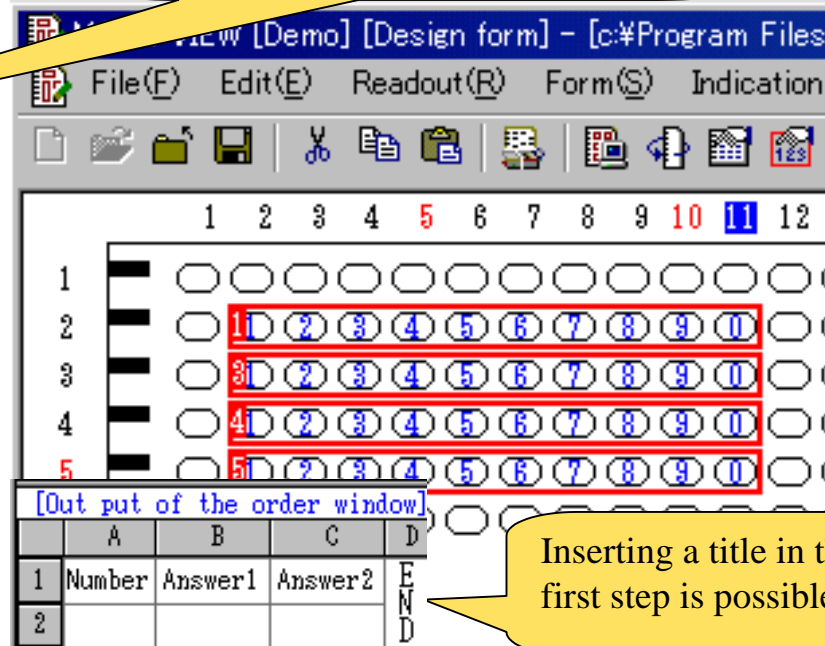
A directly type, a controlled type, etc. are displayed graphically.



Output Function-1 : The output function which approached Excel more



It adds to a text output, the output in .csv which can be immediately used by Excel is also possible



Inserting a title in the first step is possible.